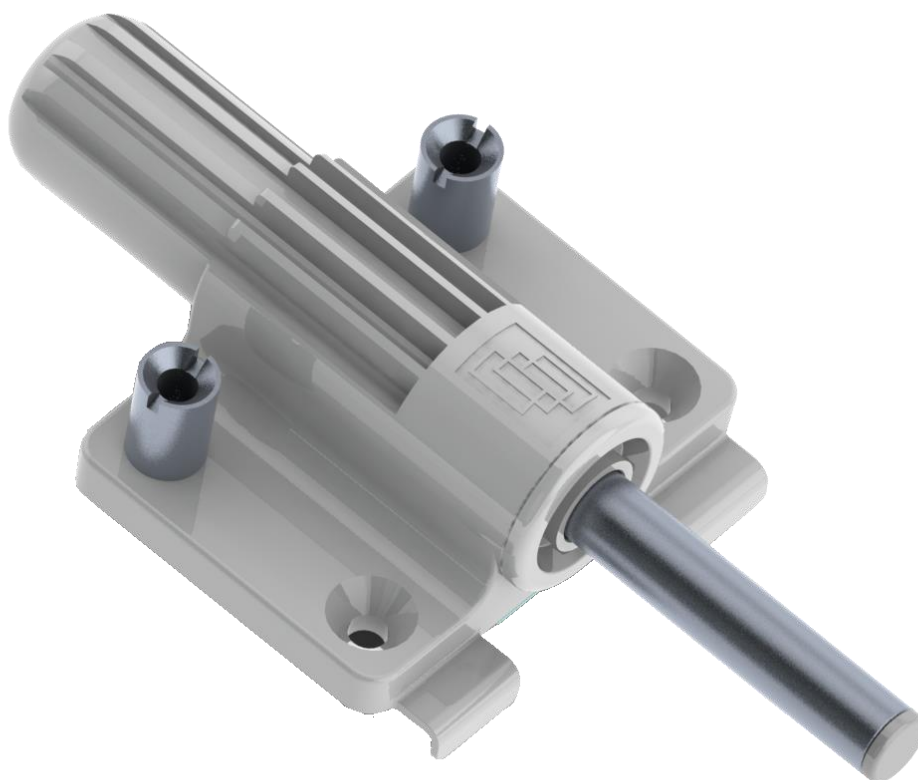
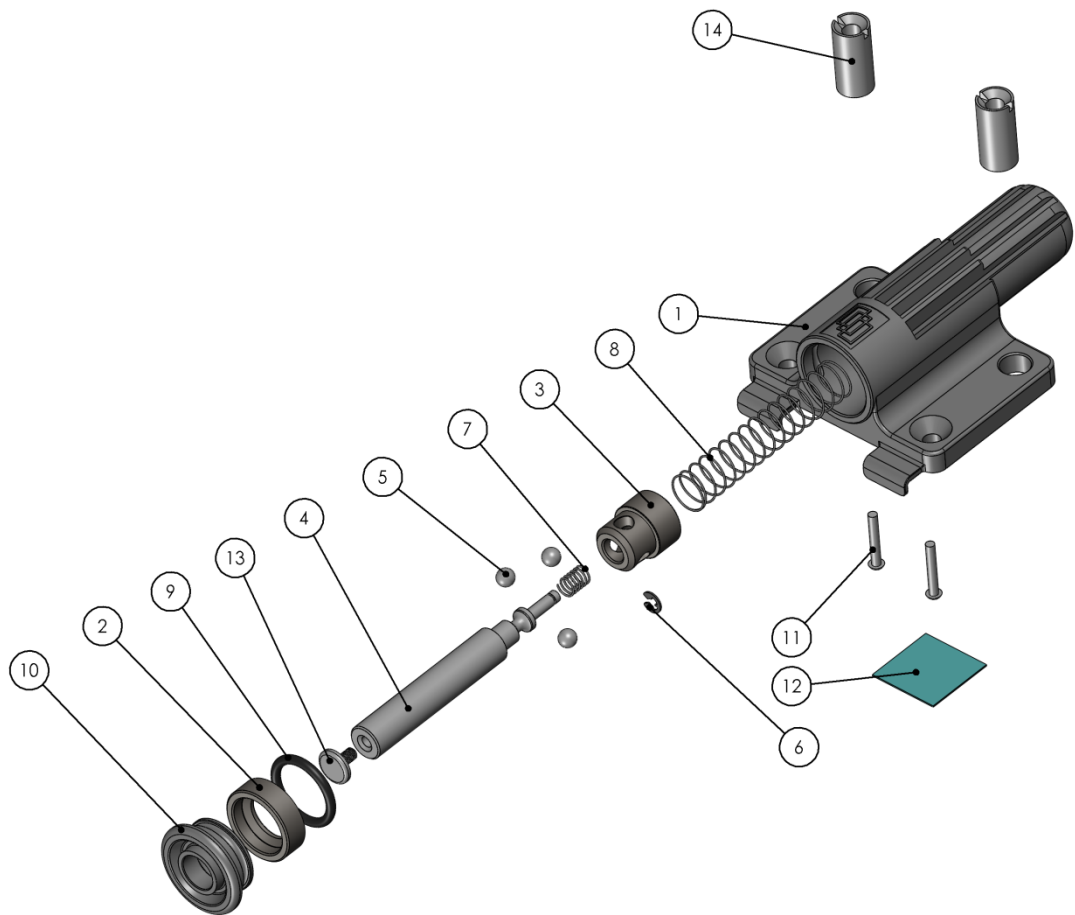


Bumper

Product technical data



Product description



Parts list:

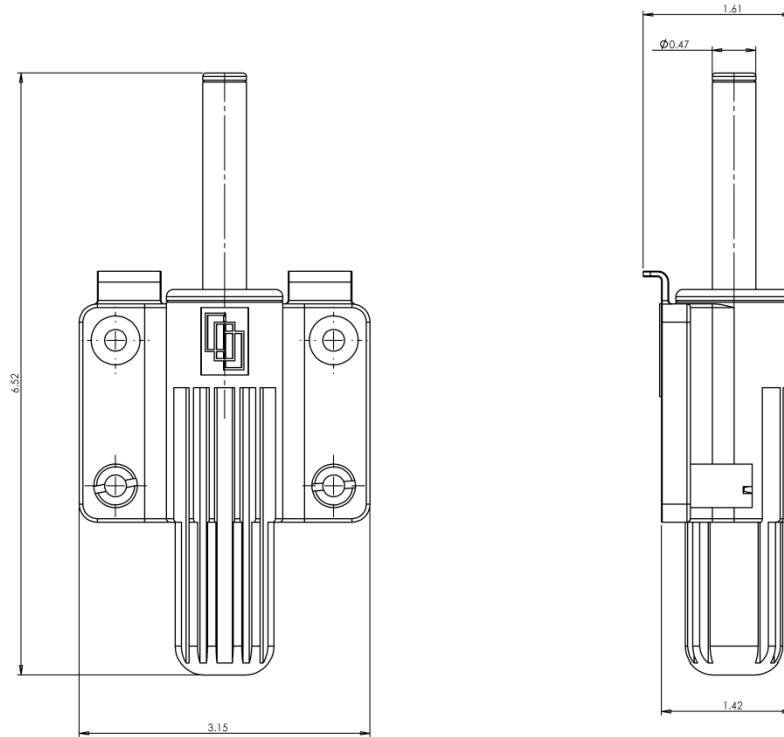
- | | |
|------------------|---------------------|
| 1. Body | 7. Spring |
| 2. Impact ring | 8. Retaining spring |
| 3. Sleeve | 9. O-Ring |
| 4. Rod | 10. Front cap |
| 5. Ball bearings | 11. Rivet |
| 6. E clip | 12. Sticky pad |
| | 13. PC bumper |

All impact related parts are made of hardened steel.

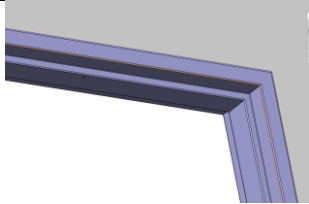
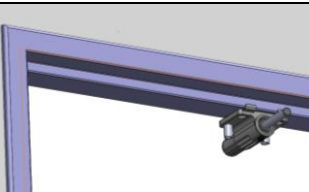
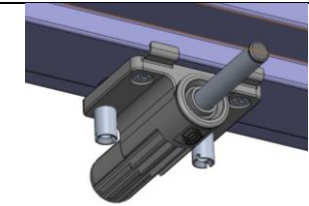
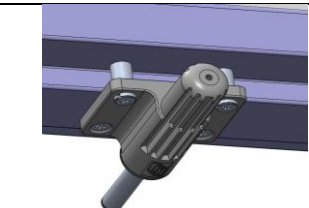
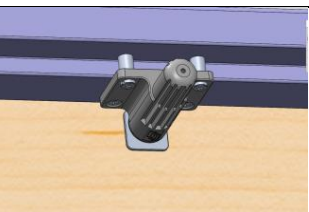


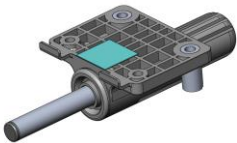
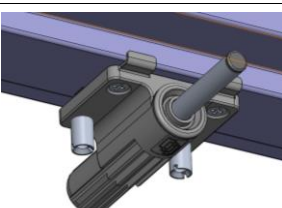
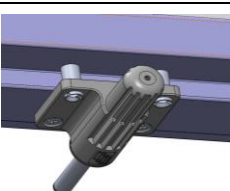

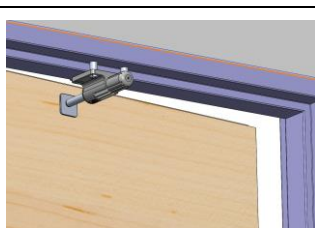
Door safety products

Dimensions:



Installation instructions

1		<p>Make a mark on the upper frame beam, 13.5" from the lock side vertical beam.</p>
3		<p>Stick the "Bumper" to the upper frame beam, so that the two distance tabs will lean on the beam and the "Bumper"'s side that points to the lock side will be on the mark.</p>
5		<p>Screw in the two adjusting bushings up to an easy touch with the frame beam.</p>
7		<p>Close the door slowly while holding the bumper tab between the "Bumper"'s plunger and the door surface.</p>
9		<p>Open the door, peel the cover film off the tab and stick it to the door, according to the marks.</p>

2		<p>Take the "Bumper" out of the box and peel the sticker cover film.</p>
4		<p>Drill and insert the "Bumper"'s two front screws, until the product is tightened to the frame.</p>
6		<p>Drill and insert the two rear screws.</p>
8		<p>When the door is closed, place the bumper tab so that the "Bumper"'s plunger pushes it in the center, and mark around the tab. The tab should be placed on the exposed area of the door and not to be squeezed between the door and the frame.</p>
10		<p>Test the "Bumper"'s function by closing the door slowly and slamming it. In slam stop position, the gap between the door and the frame should be 2"-2 5/16".</p>